

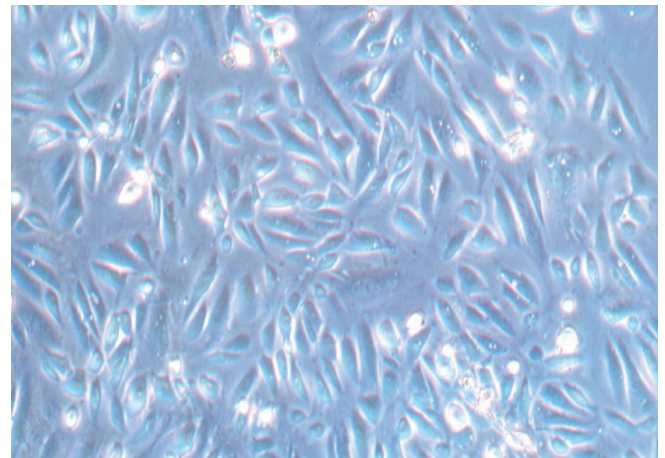
Dissociated Tumor Cells (DTCs)

What are DTCs?

Dissociated Tumor Cells (DTCs) are a single cell suspension that is dissociated from a solid tumor using enzymes and mechanical digestion. They have a heterogeneous cell composition.

Primary cells offer the closest known comparison to the original tissue and are key to research that focuses on advancing personalized medicine and drug development. BioIVT offers DTCs with:

- Strict quality control to ensure the product meets specifications
- Complete clinical data set provided for each lot
- Cryopreserved to provide greater convenience and allow you to dictate your study schedule
- Originating tissue sourced from our expansive ASTERAND® Human Tissue collection network
- Matched normal adjacent tissue and cells that are available from specific donors



Renal Cell Carcinoma DTCs at 100x magnification

Personalized Medicine Applications

DTCs provide the closest representation of the clinical scenario. While no two patients' tumors are identical, there is a greater likelihood of a therapy being effective if it has been previously tested on DTCs from patients with similar health issues.

Researchers can use patient-derived DTCs to determine how specific cohorts of cancer cells will react to different drug therapies.

DTCs can also be incorporated into 3D micro-tumor arrays to provide highly efficient, high-throughput drug screening and chemosensitivity testing.

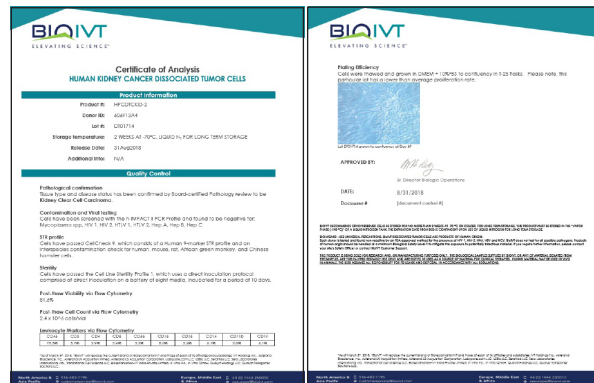
Expertise In the Isolation and Propagation of Human Primary Cells

Quality Control

Providing high-quality products is our top priority. Board-certified pathologists review each tumor sample at collection to confirm correct organ site and that diagnosis matches the clinical data.

Our quality control processes ensure that:

- Lots are sterile and pathogen-free
- Flow cytometry characterization of immune cell population and analysis of EpCAM+ tumor cells for each lot



All information is detailed on the Certificate of Analysis accompanying the cell lot.

CANCER COHORTS	PRODUCT NUMBER	AVAILABLE DTC SIZES
Human Breast DTC	HPCDTCBR	<1 Million Cells/Vial
Human Kidney DTC	HPCDTCKID	1-2 Million Cells/Vial
Human Liver DTC	HPCDTCLIV	2-3 Million Cells/Vial
Human Lung DTC	HPCDTCLUN	3-4 Million Cells/Vial
Human Colon DTC	HPCDTCCRC	4-5 Million Cells/Vial
Human Ovarian DTC	HPCDTCOVA	>5 Million Cells/Vial

Additional tumor indications are added to inventory as they become available.



Related Products:

- Primary Human Cancer Associated Fibroblasts
- Primary Human Cancer Associated Epithelial Cells
- SUM Breast Cancer Cell Lines

Visit BioIVT.com/inventory to view our ready-to-ship inventory.

