

Primary Antibodies | Secondary Antibodies | Isotype Controls | Epitope Tags | And More!

## WHY BIOSS?

"Bioss Inc. is a leading antibody manufacturer located in the greater Boston area of Massachusetts—the center of the world's largest and fastest-growing biotech community.

Our catalog consists of more than 12,000 primary antibodies and over 300,000 derived products across 35 conjugations. In addition to reliable loading control and tag antibodies, we carry over 1,400 specific antibodies recognizing proteins with phosphorylation, acetylation, or methylation modifications.

To support your work, we offer 20µl trial sizes to aid in your antibody selection and evaluation process, fast delivery, and strong scientific support!

We are inspired by your scientific discoveries!"

## FEATURED PRODUCTS

TARGET	APPLICATION	SPECIES	CATALOG
4 Hydroxynonenal	WB, ELISA, IHC, IF	Ms, Rt, My	bs-6313R
5HT2A Receptor	WB, ELISA, IHC, IF, ICC	Hu, Ms, Rt	bs-12049R
8-OHdG	ELISA, IHC, IF, ICC	Hu, Ms, Rt	bs-1278R
ABCBS	ELISA, IHC, IF, ICC	Ms	bs-1604R
ACE2	WB, ELISA, FCM, IHC, IF, ICC	Hu, Ms, Rt	bs-1004R
Acrosin	WB, ELISA, FCM, IHC, IF, ICC	Hu, Ms, Rt, Gt	bs-5151R
ADAMTS12	ELISA, IHC, IF, ICC	Hu	bs-1385R
ADAMTS7	WB, ELISA, IHC, IF, ICC	Ms, Rt	bs-0733R
Adeno-Associated Virus Capsid Protein VP1	ELISA, IHC, IF, ICC	Virus	bs-10180R
Adenosine A3 Receptor	WB, ELISA, FCM, IHC, IF, ICC	Hu, Rt	bs-1225R
Alpha-ENaC	WB, ELISA, FCM, IHC, IF, ICC	Hu, Ms, Rt	bs-2957R
AMPK gamma 3/PRKAG3	WB, ELISA, IHC, IF, ICC	Hu	bs-3968R
AP-TNAP/ALPL	WB, ELISA, FCM, IHC, IF, ICC	Hu, Ms	bs-1535R
APOH	WB, ELISA, IHC, IF, ICC	Hu, Ms, Rt	bs-1570R
ARC/Arg3.1	WB, ELISA, FCM	Hu, Ms, Rt	bs-0385R
Artemin	WB, ELISA, IHC, IF, ICC	Rt	bs-0055R
ATF3	WB, FCM, IHC, IF	Hu, Ms, Rt	bs-0519R
ATF6	WB, ELISA, FCM, IHC, IF, ICC	Hu	bs-1634R
ATG1(Ser556)	WB, ELISA, FCM, IHC, IF, ICC	Hu, Ms, Rt	bs-3464R
B3GAT1/CD57	WB, ELISA, FCM, IHC, IF, ICC	Hu, Ms, Rt	bs-1635R

TARGET	APPLICATION	SPECIES	CATALOG
beta Actin	WB, ELISA, FCM, IHC, IF, ICC	Hu, Ms, Rt, Bv, Dg, Pg, Sh, Rb, Gt	bs-0061R
Beta Glucan	WB, ELISA, IHC	Hu, Ms, Rt	bs-2455R
Receptor BSEP	ELISA, IHC	Rt	bs-1954R
Calretinin	WB, ELISA, IHC, IF, ICC	Hu, Ms, Rt	bs-0062R
Caspase 3	WB, IHC	Hu, Ms, Rt	bsm-33199M
CCL24	ELISA, IHC, IF, ICC	Ms	bs-2483R
CCR2	WB, ELISA, FCM, IHC, IF, ICC	Hu, Ms, Rt	bs-23026R
CD146	WB, ELISA, FCM, IHC	Hu, Rt	bs-1618R
CD16	WB, ELISA, FCM, IHC, IF, ICC	Hu, Ms, Rt	bs-6028R
CD163/M130	WB, ELISA, FCM, IHC, IF, ICC	Hu, Ms, Rt, Dg, Pg	bs-2527R
CD19	ELISA, FCM, IHC, IF, ICC	Hu, Ms, Rt, Sh	bs-0079R
CD200	WB, ELISA, IHC, IF, ICC	Hu	bs-6030R
CD31	WB, ELISA, FCM, IHC, IF, ICC	Hu, Ms, Rt, Bv, Pg, Rb, Cow	bs-0195R
CD31	WB, ELISA, FCM, IHC, IF, ICC	Hu, Ms, Rt, Dg, Pg, Rb	bs-0468R
CD33	WB, ELISA, FCM, IHC, IF, ICC	Hu, Ms	bs-1514R
CD4	WB, ELISA, FCM, IHC, IF, ICC	Hu, Ms, Rt, Pg, Ch	bs-0647R
CD56	WB, ELISA, FCM, IHC, IF, ICC	Hu, Ms, Rt	bs-0805R
CD62p	WB, ELISA, FCM, IHC, IF, ICC	Hu, Ms, Rt, Pg	bs-0561R
CD68	WB, ELISA, FCM, IHC, IF, ICC	Hu, Ms, Rt	bs-0649R
CDB	WB, ELISA, FCM, IHC, IF, ICC	Hu, Ms, Rt	bs-0648R



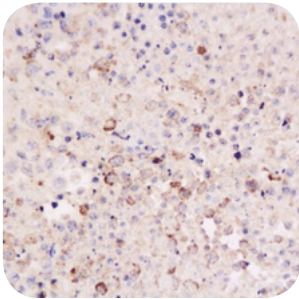
## THE BIOSS GUARANTEE

*All full-size products are protected by a one-year, replacement or money back, satisfaction guarantee for listed applications and cross-reactive species.*

View the entire catalog at **BiossUSA.com**.

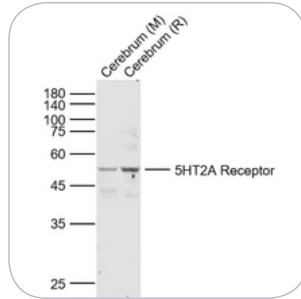
### Primary Antibodies | Secondary Antibodies | Isotype Controls | Epitope Tags | And More!

CD8 | bs-0648R



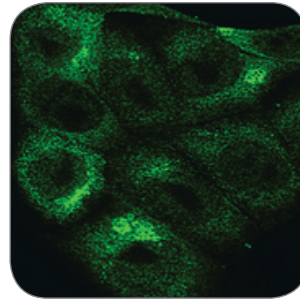
IHC-P | Mouse lymphoma tissue

5HT2A Receptor | bs-12049R



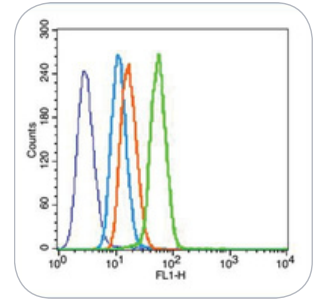
WB | Mouse-Rat cerebrum

HIF-1 Alpha | bs-0737R



IF (ICC) | KLN205 Cells

HIF-1 alpha | bs-0737R



FCM | HeLa cells

TARGET	APPLICATION	SPECIES	CATALOG
CHRNA7	Publ Med WB, ELISA, IHC, IF, ICC	Hu, Ms, Rt	bs-1049
COLEC10	WB, ELISA, IHC, IF, ICC	Rt	bs-8033
Collagen1	Publ Med WB, ELISA, FCM, IHC, IF, ICC	Hu, Ms, Rt, Rb	bs-10423
CXCL1	Publ Med ELISA, IHC, IF, ICC	Hu, Ms	bs-10234
Cyclin F	WB, ELISA, IHC, IF, ICC	Hu, Rt	bs-1686
Cyclin G2	Publ Med WB, ELISA, IHC, IF, ICC	Hu, Ms, Rt, Pg	bs-3822
Cytoglobulin	Publ Med ELISA, IHC, IF, ICC	Rt	bs-0590
DAGLB	ELISA, IHC, IF, ICC	Ms	bs-14190
Defensin beta2	ELISA, IHC, IF, ICC	Ms	bs-1295
DEP1/PTPRJ	WB, ELISA, IHC	Hu, Ms	bs-2567
Desmoglein3	Publ Med WB, ELISA, IHC, IF, ICC	Ms, Rt	bs-6585
EAAT2	WB, ELISA, FCM	Hu, Rt	bs-1751
EMP1	WB, ELISA, FCM, IHC, IF, ICC	Hu, Ms, Rt	bs-0558
ERG25	WB, ELISA, IHC, IF, ICC	Ms	bs-2947
Factor8	Publ Med ELISA, IHC, IF, ICC	Hu, Ms, Rt	bs-2974
GADD45	Publ Med WB, ELISA, FCM, IHC, IF, ICC	Hu, Ms, Rt	bs-1360
GLIS3	ELISA, FCM, IHC, IF, ICC	Hu, Rt, Sh	bs-16249
Glycophorin B	ELISA, IHC, IF, ICC	Hu	bs-10041
HCV-NS3	WB, ELISA, FCM, IHC, IF, ICC	Hu, Virus	bs-0219
Hepatitis E Virus	Publ Med WB, ELISA, IHC, IF, ICC	Hu, Rb	bs-0212
ORF3	ICC	R	
HIF-1 Alpha	WB, ELISA, FCM, IHC, IF, ICC, IP	Hu, Ms, Rt, Rb	bs-0737
HRH1	WB, ELISA, FCM, IHC, IF, ICC	Hu	bs-6663
IL-22R	WB, ELISA, IHC	Hu, Ms	bs-2624
IL-2R gamma	WB, ELISA, FCM	Hu, Rt	bs-2545
IL2R A	WB, ELISA, FCM, IHC	Hu, Ms	bs-0577
Insulin Receptor alpha	WB, ELISA, FCM, IHC, IF, ICC	Hu, Rt	bs-0047
Integrin Alpha V + Beta3	WB, ELISA, FCM, IHC, IF, ICC	Hu, Ms, Rt	bs-1310
LAMP2	WB, ELISA, FCM, IHC, IF, ICC	Hu, Ms, Rt, Pg	bs-2379
LI-cadherin	WB, ELISA, IHC	Hu, Ms	bs-1617
LIFR/CD118	Publ Med WB, ELISA, FCM, IHC, IF, ICC	Hu	bs-1458

TARGET	APPLICATION	SPECIES	CATALOG
MAG	WB, ELISA, IHC, IF, ICC	Hu, Ms, Rt	bs-0257
NCR1	WB, ELISA, IHC	Hu, Ms	bs-10027
Newcastle disease virus	ELISA, FCM	Hu, Ha, Virus	bs-10044
NKB	ELISA, IHC, IF, ICC	Rt	bs-0070
NLRP3	WB, ELISA, FCM, IHC, IF, ICC	Hu, Ms, Rt, Dg	bs-10021
NOS-2/ iNOS	WB, ELISA, FCM, IHC, IF, ICC	Hu, Ms, Rt, Ch	bs-2072
Nrf2 (Ser40)	WB, ELISA, FCM, IHC, IF, ICC	Hu, Ms, Rt, Pg	bs-2013
NSUN6	WB, ELISA, IHC, IF, ICC	Hu	bs-19484
OPG	Publ Med WB, ELISA, IHC, IF, ICC	Hu, Ms, Rt, Rb	bs-0431
PAK5	ELISA, IHC, IF, ICC	Ms, Rt	bs-0655
PDGFRA (SA1)	WB, FCM, IHC, IF, ICC	Hu, Ms, Rt	bsm-52829
Perilipin2	WB, ELISA, IHC, IF, ICC	Hu	bs-10780
PMP22	Publ Med WB, ELISA, IHC, IF, ICC	Ms, Rt	bs-0235
PPAR alpha	Publ Med WB, ELISA, FCM, IHC, IF, ICC	Hu, Ms, Rt, Ch	bs-3614
PPAR Gamma (ser273)	WB, ELISA, IHC, IF, ICC	Hu, Ms, Rt, Sh, Gp	bs-4888
PRODH	WB, ELISA, IHC, IF, ICC	Ms, Rt	bs-5813
RBM20	WB, IHC, IF	Hu, Ms, Rt	bs-9606
S100P binding protein	WB, ELISA, FCM, IHC, IF, ICC	Hu, Ms	bs-6577
Sema3F/semaphorin 3F	Publ Med ELISA, IHC, IF, ICC	Hu, Ms, Rt	bs-1122
SLAMF7/CD319/CS1	WB, ELISA, FCM	Hu, Ms	bs-2544
SLC12A3	Publ Med ELISA, FCM, IHC, IF, ICC	Hu	bs-7694
Spinophilin/Neurabin2	WB, ELISA, IHC, IF, ICC	Ms, Rt	bs-12146
Tartrate Resistant Acid Phosphatase	Publ Med WB, ELISA, FCM	Hu, Ms	bs-6434
TBRG1	WB, ELISA, IHC, IF, ICC	Hu, Rt	bs-4268
TFF3	WB, ELISA, FCM, IHC, IF, ICC	Hu, Ms, Rt	bs-0535
Thy-1	WB, FCM, IHC, IF, ICC	Hu, Ms, Rt, Bv, Dg, Sh	bs-0778
TIE1	WB, ELISA, IHC, IF, ICC	Hu, Rt	bs-1334
TIE2/CD202b	WB, ELISA, FCM, IHC, IF, ICC	Hu, Ms, Rt, Bv	bs-1300
TIMP-1	WB, ELISA, IHC, IF, ICC	Hu, Ms, Rt, Rb	bs-0415
TNF alpha	WB, ELISA, IHC, IF	Hu, Ms, Rt, Rb, Ho	bs-2081

WB - Western Blot | IHC-P - Immunohistochemistry Paraffin | IHC-F - Immunohistochemistry Frozen | ICC - Immunocytochemistry | IF - Immunofluorescence | ELISA - Enzyme Linked Immunosorbent Assay | FCM - Flow Cytometry Bv - Bovine | Ch - Chicken | Dg - Dog | Ha - Hamster | Gp - Guinea Pig | Gt - Goat | Ho - Horse | Hu - Human | Ms - Mouse | My - Monkey | Pg - Pig | Rb - Rabbit | Rt - Rat | Sh - Sheep